

eco2 MMS™

PRODUCT DESCRIPTION

ECO2 MMS™ (MOISTURE MANAGEMENT SYSTEM) is a two-component, solvent-free, 100% solids epoxy-based moisture management one-coat system sealer designed to: (1) Protect finish flooring systems up to 100% RH as per ASTM F-2170; (2) Reduce moisture vapor emission rate of a concrete substrate up to 25 lbs/1,000 sq. ft. per 24 hours down to less than 3 lbs/1,000 sq. ft. per 24 hours per ASTM F-1869; and (3) Resist pH levels up to 14 as per ASTM F-710.

Green Features

- Use ECO2 MMS™ + ECO2 AGGREGATE™ with ECO2 levelers as a complete "green" system to protect finish flooring from moisture up to 100% RH as per ASTM F-2170
- Meets California Department of Public Health CDPH/EHLB/Standard Method Version 1.2, 2017 (Emission testing method for CA Specification 01350)
- Solvent-free - no VOCs

Performance Features

- Use to dramatically reduce moisture emissions from concrete substrates up to:
 - 100% RH per ASTM F-2170
 - 25lbs per ASTM F-1869
 - 14 pH per ASTM F-710
- Dries quickly (12 hours at 73°F [23°C] and 50% RH)
- Excellent for fast track projects keeping ahead of schedule
- 30-minute pot life
- Accepts finish flooring systems in 12 hours
- For interior institutional, commercial and residential applications
- Applies easily with a squeegee or roller in one coat

Packaging

2 US gal (7.56 L)

Part A: 1 US gal (3.78 L)

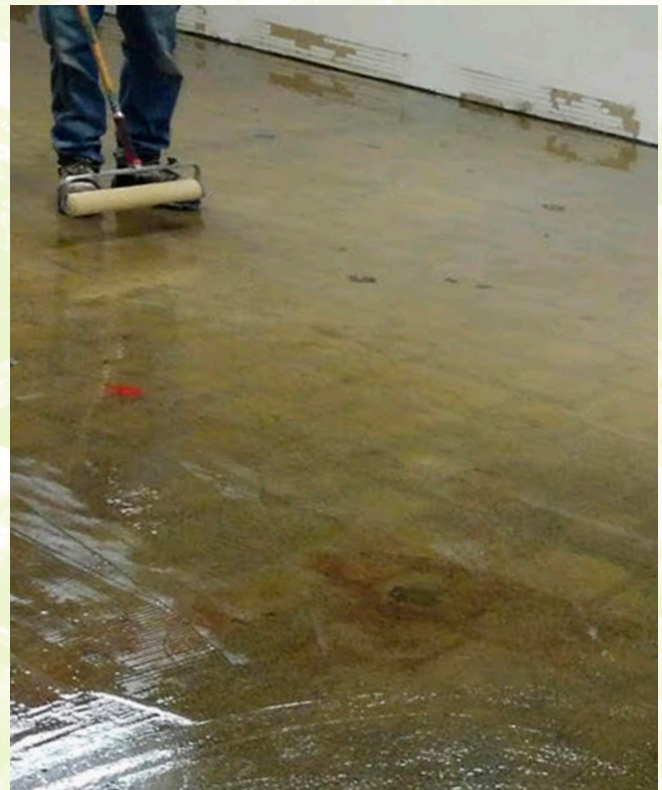
Part B: 1 US gal (3.78 L)

Suitable Substrates

- Concrete as little as 5 days (contact technical service).

Limitations

- For INTERIOR installations only.
- Do not install at temperature below 50°F (10°C) or above 90°F (32°C) (contact technical service when not in these ranges).
- Do not use directly over gypsum-based leveling and patching compounds, old carpet adhesive left-over, cut-back adhesive residue or over existing hard and soft flooring such as ceramic floor tile, quarry tile, vinyl sheet good, VC tile, linoleum, terrazzo, etc.
- Do not use if there is a curing agent sealer on the concrete substrate.
- Do not use this product as a floor finishing primer or surface sealer or without covering it over with a floor covering material.
- Not for use in areas subject to negative hydrostatic pressure.



TECHNICAL DATA

WORKING PROPERTIES (@73°F [23°C] and 50% RH)	
Pot life	30 minutes
Drying time	12 hours

PHYSICAL PROPERTIES (@73°F [23°C] and 50% RH)	
Solvent Free/VOC content	0 g/L
Flash point	> 212°F (100°C)
Water vapor transmission reduction (ASTM E 96-95)	>95%
Water vapor transmission reduction (ASTM F1869)	>95%
Alkaline resistance (ASTM D1308 - 14 days direct contact @ pH 14)	Passed
Approximate coverage per 2 US gal (7.56 L) - @ a profile of CSP #3 Note: Rough surfaces could reduce the coverage per gal.	300 ft ² (28 m ²)
Protects finished flooring system per ASTM F-2170	Up to 100% RH
Protects finished flooring system per ASTM F-1869	Up to 25 lbs/1000 ft ² per 24 hours
Protects finished flooring system per ASTM F-710	Up to pH 14
20-year full system replacement warranty including labor	Yes*
Quality Assurance Installation Program	Yes
Single Source System Installation Moisture Management	Yes
Shelf life	
12 months if kept in its original unopened packaging and stored in a warm, dry location.	

** Contact ECO2 regarding project specific warranties.

INSTALLATION

Surface Preparation

- Surfaces must be clean and free of dust, oil, grease, paint, tar, wax, curing agent, primer, sealer, form release agent or any deleterious substance and debris which may prevent or reduce adhesion.
- Acids, concentrated alkaline conditions and cleaning chemical residues must be neutralized or removed.
- All concrete substrates must be at least 5 days old, solid, sound, slightly textured and have a direct tensile cohesive strength greater than 175 psi (1.2 MPa) when tested in accordance with ACI 503 R - (Appendix A) procedure.
- For non-porous concrete substrates, use mechanical preparation. Smooth concrete substrate surfaces must be mechanically prepared in accordance with an engineer-approved procedure (Shot-blasting, scarification, grinding, sand or water-blasting, etc.) to completely remove all paint, loosely bonded toppings, loose particles and contaminants and to provide sufficient surface texture and profile (ICRI-CSP #3) for the adequate bonding of ECO2 MMS™ (MOISTURE MANAGEMENT SYSTEM).
- Dormant cracks less than a hairline (1/32" [0.8 mm]) can be covered with ECO2 MMS. Dormant joints and dormant cracks greater than a hairline (1/32" [0.8 mm]) that will not be honored must be pre-filled with a blend of ECO2 MMS and ECO2 Powder. *Contact Technical Service regarding this process.*

Mixing and Application

- Use clean mixing-tools and containers.
- Pour Part A and Part B into a clean, proper-sized mixing container.
- Using a mechanical mixer (300-500 RPM), mix until a homogeneous consistency is achieved. Do not over-mix or allow air into the mixture.
- Apply ECO2 MMS™ (MOISTURE MANAGEMENT SYSTEM) with a squeegee or a roller making sure to cover the surface evenly leaving no gaps. Apply product using a coverage of approximately 300 sq. ft. per 2 US gal (28 m² per 7.56 L) to achieve desired performance.

ECO2 Aggregate Broadcasting

ECO2 Aggregate is 100% Silica Sand Free and 100% Post-Consumer Recycled. Contact ECO2 Technical Service regarding this process.

- While the ECO2 MMS is still in a fresh state (maximum 30 minutes) broadcast ECO2 Aggregate consistently over the entire area. Use approximately 1 lb. of product per sq. ft. of area (5 kg/m²).
- Once the ECO2 Aggregate broadcast is complete, avoid all general traffic over the surface for a minimum of 12 hours.
- After 12 hours, broom sweep and vacuum the surface to remove all loose ECO2 Aggregate. The clean, prepared surface of the ECO2 Aggregate is the priming system for ECO2 Levelers. No additional priming is necessary.

Expansion and Control Joints

- Cracks and voids should be completely cleaned (contaminated cracks must be cut out to a depth of 1/4" x 1/4" to remove any contamination from the side walls), and repaired using a repair mortar, or an appropriate blend of ECO2 MMS and ECO2 Powder. *Contact Technical Service regarding this process.*
- DO NOT FILL EXPANSION JOINT SPACE until completion of the job.
- Install a suitable industry-approved compressible bead and flexible sealant to caulk expansion and control joints. Follow the sealant manufacturer's installation instructions.
- Install and space expansion and control joints in all directions in accordance with TCNA HANDBOOK FOR CERAMIC TILE INSTALLATION Detail #EJ-171 recommendations, or TTMAC Specification Guide 09 30 00 Detail #301-MJ recommendations.

Please note that ECO2 is not responsible for issues arising from expansion and isolation joints, saw cuts or new or existing cracks that may develop.

Drying Time

- Allow Protect surface for 12 hours after application to allow product to fully dry. If pin holes appear after drying, application of a second coat may be required.

Note: ECO2 MMS™ (MOISTURE MANAGEMENT SYSTEM) is a sealer, which is not a suitable bonding surface for cementitious tile mortars, screeds, patching compounds, self-leveling underlayments, and most flooring adhesives. To achieve an adequate bond to the substrate, sealed surfaces must be primed with ECO2 PRIMER™ (see respective technical data sheet for details). ECO2 AGGREGATE can be used to achieve a profiled substrate to eliminate the need for non-porous priming when self-leveling (reference section on "ECO2 Aggregate Broadcasting" for details).

Cleaning

Clean tools and hands with mineral spirits while the product is still fresh.

Health and Safety

Refer to the Safety Data Sheet (SDS) for complete details.

AVAILABILITY AND COST

Contact ECO2™ for availability and cost.

WARRANTY

ECO2™ warrants that this product is manufactured using quality raw materials and is of merchantable quality and suitable for the purpose for which it was intended. ECO2™ liability under this warranty shall be limited to the replacement of its product proven to be defective. Neither seller nor manufacturer shall be liable for any injury, loss or damage, direct or consequential, arising from the use of/or the inability to use this product.

FILING SYSTEM

Additional information is available upon request, or by visiting www.eco2level.com.



ECO2™

PO Box 170065
Boston, MA 02116

Main Number: (617) 456-7639
Toll-Free: (800) 245-8165
Fax: (617) 456-7647

Email: info@eco2level.com
Web: www.eco2level.com